



# DATENBLÄTTER MIET-EQUIPMENT



**Zuverlässige Lösungen  
für Notstrom,  
Mietaggregate  
und mobile Energie**

EUROPAWEIT AN IHRER SEITE



## Specification

50Hz:  
LTP: 33kVA - 26,4kW - 47 A, 400/ 230 V cos 0,8

60Hz:(Switchable to 60Hz)  
LTP: 33kVA - 26,4kW - 47 A, 400/ 230 V cos 0,8

Engine : FPT IVECO, F32M1F  
Alternator: Stamford P1144G  
Connection: 63A, 32A, 16A , 230Vac Single Phase  
Kupferschiene Kabenschuh 10 mm

## Noise Emission

62 dB(A) in 7m.

## Exhaust Emission

Stage 3a

## Operation Modes

- > Isynchronous Mode (Island Mode)
- > Mains Parallel
- > Emergency Genset Control
- > Synchronizing Feature
- > Emergency Manual control
- > Remote CB Control
- > 100 % Supply in less than 15 sec.

Engine Preheating and Battery Charging Equipment

## Controller

- > Engine oil pressure
- > Cooling water overtemperature
- > Geno Surge
- > Geno Undervoltage
- > Geno Overfrequency
- > Geno Subfrequency
- > Geno Overload
- > Fuel Shortage Warning



## Fuel Tank

260 Liter Fuel on Board .  
Connection of external Tank



## Dimension and Weight

- > Length = 2,26m x Width = 1,04m x Height = 1,8m
- > Weight 1360 kg incl. Diesel

# Mobile-Rental Genset 110 kVA Emission Standard Stage 3A



## Performance data

LTP 110 kVA - 88kW - 158 A, 400/ 230 V cos. 0,8  
Step load 85 % => frequency drop < 10 %

## Dimensions

Width: 1100 mm  
Length: 2900 mm  
Height: 1700 mm  
Weight: 2080 kg

Dieselmotor: FTP N45TE2F  
Generator: Stamford UCI274C

## Operating options and features

- > Remote start option with Automatic Transfer Switch ATS
- > Manual operation
- > Transport with car trailer

The system is equipped with engine preheating and battery charger, so that the requested power is available within < 15 seconds in the event of a mains failure.

## Noise Emission

67 dB(A) in 7m

## Monitoring/Control

- > Engine oil pressure
- > Cooling water overtemperature
- > Geno Surge
- > Geno Undervoltage
- > Geno Overfrequency
- > Geno Subfrequency
- > Geno Overload
- > Fuel Shortage Warning

## Fuel/Diesel Tank

Tank on board (450 l) „external tank possible“

## Characteristics of car trailers in case of need

- > Soundproofed structure
- > Tandem trailer
- > Maximum permissible total weight: 3,500 kg
- > Net weight: 450 kg
- > Brake system: overrun brake
- > Auxiliary brake system (parking brake)
- > Driving licence E to B



## Performance data

PRP power 130 KVA - 104 KW - 182 A, 400/ 230 V cos 0.8  
Emergency power 143 KVA

Shock load 85 % frequency drop < 10 %

Diesel engine: Volvo Penta TAD532GE  
Generator: Marelli

## Dimensions

Width: 1200mm  
Length: 3200mm  
Height: 1840mm(2230mm)  
Weight: 2080kg

## Noise Emission

67 dB(A) in 7m

## Exhaust Emission

Stage 3A

## Operations and features

- > Remote start option with matching mains/emergency switch box
- > Manual operation
- > Transport with car trailer

The system is equipped with engine preheating and battery charger.

## Monitoring/Control

- > Engine oil pressure
- > Cooling water overtemperature
- > Geno Surge
- > Geno Undervoltage
- > Geno Overfrequency
- > Geno Subfrequency
- > Geno Overload
- > Fuel Shortage Warning

## Fuel/Diesel Tank

Tank on Bord (260 l)

## Characteristics of car trailers in case of need

- > Soundproofed structure
- > Tandem trailer
- > Maximum permissible total weight: 3,500 kg
- > Net weight: 450 kg
- > Brake system: overrun brake
- > Auxiliary brake system (parking brake)
- > Driving licence E to B



## Performance data

PRP power 205 KVA - 163 KW - 296 A, 400/ 230 V cos 0.8  
Emergency power 220 KVA

Step load: 75 % frequency drop < 10

Diesel engine: Deutz BF6M1013FCG3  
Alternator: Marelli MJB 225-250

## Dimensions

Width: 1100mm  
Length: 3000mm  
Height: 2100mm  
Weight: 2747kg



**Noise Emission**

67 dB(A) in 7m

**Exhaust Emission**

Stage 3A

**Operating options and features**

Remote start option with matching mains/emergency switch box

- > Manual operation
- > Transport with car trailer

The system is equipped with engine preheating and battery charger, so that the required power can be supplied within 15 seconds in the event of a power failure.

**Monitoring/Control**

- > Engine oil pressure
- > Cooling water overtemperature
- > Geno Surge
- > Geno Undervoltage
- > Geno Overfrequency
- > Geno Subfrequency
- > Geno Overload
- > Fuel Shortage Warning

**Fuel/Diesel Tank**

Tank on Bord (360 l)

**Characteristics of car trailers in case of need**

- > Soundproofed structure
- > Tandem trailer
- > Maximum permissible total weight: 3,500 kg
- > Net weight: 450 kg
- > Brake system: overrun brake
- > Auxiliary brake system (parking brake)
- > Driving licence E to B

# Mobile Rental Genset 300 kVA Emission Standard Stage 3A



## Performance data

PRP power: 300 kVA - 240 kW - 357.2 A, 400/230 V cos. 0.8

Emergency power output: 330 kVA

Step Load 60% Frequency Dip < 10%

Step Load 50% Frequency Dip < 5%

Dieselmotor: FPT C87TE1PV

Generator: Stamford HCI4D

The system is equipped with engine preheating and battery charger, so that the requested power can be reached in < 15 seconds in the event of a power failure.

## Noise Emission

67 dB(A) in 7m

## Operating options

- > Island operation
- > Grid-parallel operation (synchronization device)
- > Emergency power operation (built-in grid monitoring)
- > Seamless back synchronization
- > TWIN operation
- > Emergency operation (required for hospitals)

## Monitoring/Control

- > 3-phase network monitoring
- > Engine oil pressure
- > Engine bear temperature
- > Cooling water overtemperature
- > Geno Surge
- > Geno Undervoltage
- > Geno Overfrequency
- > Geno Subfrequency
- > Geno Overload
- > Fuel Shortage Warning

All faults can be sent to a mobile phone with built-in GSM module.



## Fuel/diesel tank

850 liter tank on board (running time up to 24 hours depending on load)  
 Refuelling via DIN standard connection.  
 External tank possible (clutch and changeover built-in)

## Container features

- > Soundproofed structure
- > Weight: 4000 kg
- > Height: 2500 mm
- > Width: 1200 mm
- > Length: 4340 mm

TWIN and TRIPLE operation possible Busbar system and standard sockets with Powerlock connection.



## Performance data:

Emergency power output: 550 kVA  
PRP power: 500 kVA - 400 kW - 724A, 400/ 230 V cos 0.8

Shock load 60 % frequency drop < 10 %  
Surge load 50 % frequency drop < 5 %

Diesel engine: VOLVO TAD 1651/GE Stage 3A  
Generator: Marelli

The system is equipped with engine preheating and battery charger, so that the required power can be reached within < 15 seconds in the event of a power failure.

## Operating options

- > Island operation
- > Grid-parallel operation (synchronization device)
- > Emergency power operation (built-in grid monitoring)
- > Seamless back synchronization
- > TWIN operation
- > Emergency operation (required for hospitals)



## Fuel/diesel tank

990 litre tank on board (runtime up to 24 hours depending on load), with drip tray.  
Refuelling via DIN standard connection.

External tank possible (clutch and changeover built-in)

## Container features

- > Sound-absorbing design
- > Exhaust silencer/tank in container
- > Weight: 4600 kg
- > Height: 240 cm
- > Width: 130 cm
- > Length: 460 cm



## Cable outlet box

TWIN OPERATION  
Rail system/standard sockets





## Performance data

Continuous power: 570 kVA - 456 kW - 826 A, 400/230 V cos 0.8

Emergency power: 630 kVA - 504 kW - 913 A, 400/230 V cos 0.8

Surge load 70% frequency drop < 10%

Surge load 50 % frequency drop < 5 %

Diesel engine: VOLVO TAD 1642GE

Generator: Stamford

## Operating options

- > Island operation
- > Emergency power operation (built-in mains monitoring and mains circuit breaker)
- > Load test operation with handover synchronization. No permanent parallel operation possible

## Monitoring/Control

- > Engine oil pressure
- > Engine bear temperature
- > Cooling water overtemperature
- > Geno Surge
- > Geno Undervoltage
- > Geno Overfrequency
- > Geno Subfrequency
- > Geno Overload
- > Fuel Shortage Warning

The system is equipped with engine preheating and battery charger, so that the required power can be reached within < 15 seconds in the event of a power failure.

Powerlock connections for Mains input and Consumer output.  
2 x per phase, 1 x Neutral 1 x Ground

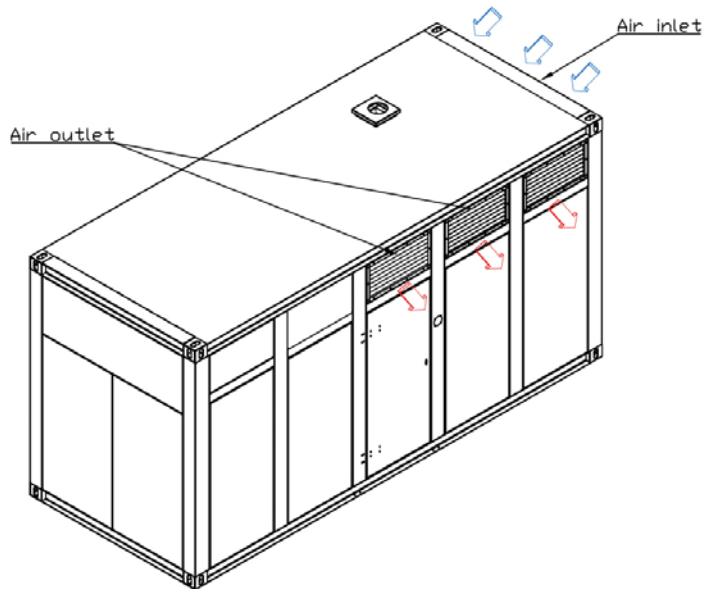


## Fuel/Diesel tank

900 liter tank on board  
Connection option for external tank

## Container features

- > Soundproofed structure with 70 dBA in 7 m
- > Exhaust silencer
- > Weight: 6000 kg
- > Height: 2600 mm
- > Width: 1630 mm
- > Length: 5000 mm



## Performance data

Emergency power output: 717 kVA  
PRP power: 650kVA - 520 kW - 942 A, 400/230 V cos. 0.8

Super Silent 60dB(A) @7m

Diesel engine: Volvo TWD1644GE

Generator: Meccaltee Eco40 2L4

Control: Comap AMF25

The system is equipped with engine preheating and battery charger, so that the requested power can be reached in < 15 seconds in the event of a power failure. can be accessed.

## Operating options

- > Island operation
- > Emergency power operation (built-in grid monitoring)

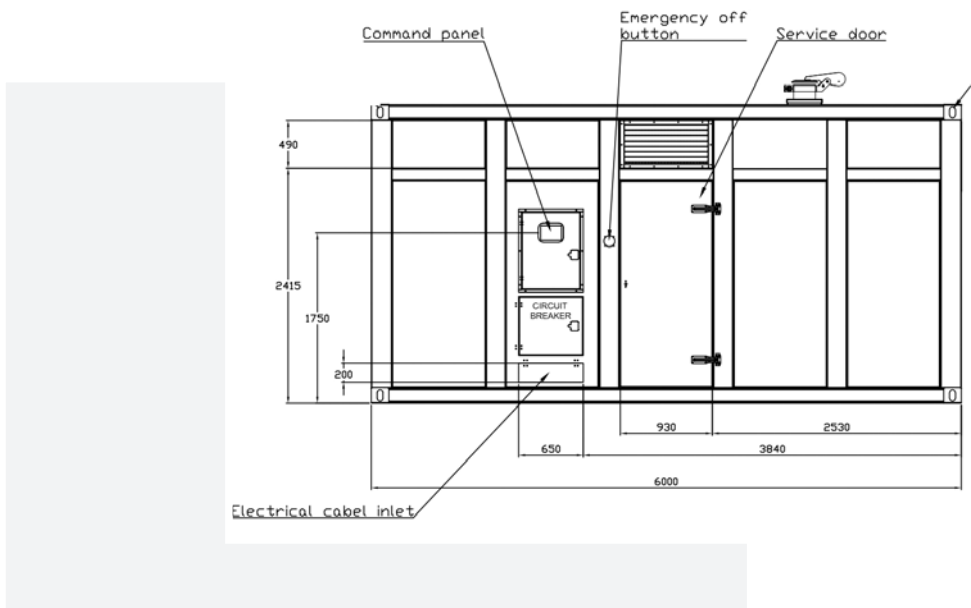
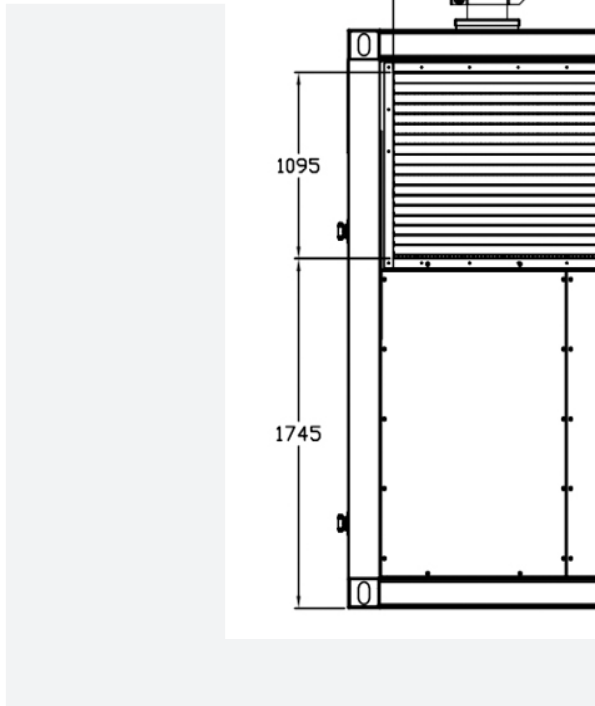


## Fueltank

1000 Liter Tank on Bord with Drip Pan

### Container features

- > Sound-absorbing design
- > Farbay Ral 9010
- > Weight: 10,000 kg
- > Height: 3000 mm
- > Width: 2545 mm
- > Length: 6060 mm





## Performance data

Emergency power output:	717 kVA
PRP power:	650kVA - 240 kW - 520 A, 400/230 V cos. 0.8
Diesel engine:	Volvo TWD1644GE
Generator:	Stamford HCI5F

The system is equipped with engine preheating and battery charger, so that the requested power can be reached in < 15 seconds in the event of a power failure. can be accessed.

## Operating Options

- > Island operation
- > Grid-parallel operation (synchronization device)
- > Emergency power operation (built-in grid monitoring)
- > Seamless back synchronization
- > TWIN operation



## Monitoring/Control: COMAP Inteligen

- > 3-phase network monitoring
- > Engine oil pressure
- > Engine temperature
- > Cooling water overtemperature
- > Geno Surge
- > Geno Undervoltage
- > Geno Overfrequency
- > Geno Subfrequency
- > Geno Overload
- > Fuel Shortage Warning

## Fuel/diesel tank

900 litre tank on board with drip pan

## Container features

- > Sound-absorbing design
- > Color: Ral 9010
- > Weight: 6.400 kg
- > Height: 2580 mm
- > Width: 1860 mm
- > Length: 5520 mm



## Performance data

Continuous power PRP: 900 KVA - 720 KW - 1450 A, 400/ 230 V cos 0,8  
Emergency power output LTP: 1000 KVA - 720 KW - 1450 A, 400/ 230 V cos 0,8

Step Load:  
switchable: 60% Frequency Drop < 10%  
50Hz and 60 Hz

Diesel Engine: Cummins QST 30 G2  
Alternator: Marathon

Power Output: Built-in Generator Circuit Breaker  
Connections: Copper Busbar /Cable luc 12 mm

The system can be used as a twin-pack thanks to the synchronization device and load loadshare device

## Noise emission

70 dB(A) in 7m



## Operating options

- > Island operation
- > Grid-parallel operation (synchronization device)
- > Emergency power operation (built-in grid monitoring)
- > Seamless back synchronization
- > Emergency operation ( required for hospitals )
- > External circuit breaker control possible

The system is equipped with engine preheating and battery charger, so that the requested power can be called up in < 15 seconds in the event of a power failure

## Monitoring/Control

- > 3-phase network monitoring
- > Engine oil pressure
- > Engine coolant temperature
- > Geno Surge
- > Geno Undervoltage
- > Geno Overfrequency
- > Geno Subfrequency
- > Geno Overload
- > Fuel Shortage Warning



## Fuel/Diesel Tank

950 liter Fueltank on board

Refueling via DIN standard connection with limit sensor (when transporting the trailer on public roads, max. 990 liters in the tank!). Connection option via standard couplings for external tanks. The fuel tank is double-walled. In addition, the container floor is oil-resistant and can collect all liquids

## Container features

- > Soundproofed structure
- > 20 Fuss High Cube Norm Container
- > Total weight: 14,500 kg without fuel
- > Container height: 2,856 meters
- > Trailer Length: 6,058 meters
- > Trailer width: 2,438 meters



## Performance data

Continuous power PRP: 1100 kVA - 880 KW - 1811 A, 400/ 230 V cos 0.8  
Emergency power output: 1220 kVA - 970kW

Surge Load: 50% Frequency Drop < 10%

Dieselmotor: MTU 18 V2000 G63  
Generator: Stamford LVI634G

Power Output: Built-in Generator Circuit Breaker  
Connections: Powerlock / Kabenschuh 12 mm

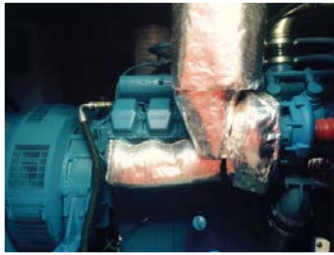
The system can be used as a twin-pack thanks to the synchronization device and loadshare device.

## Noise emission

70 dB(A) in 7m.

## Exhaust emission

NOx: < 1700 mg/m<sup>3</sup>N  
CO: < 300 mg/ m<sup>3</sup>N  
HC: < 150 mg/m<sup>3</sup>N  
Staub: < 50 mg/ m<sup>3</sup>N  
Formaldehyd: < 60 mg/ m<sup>3</sup>N



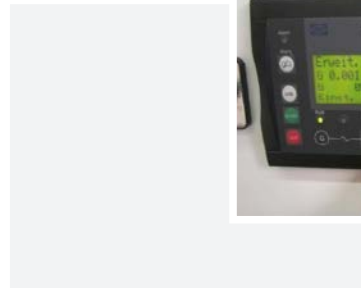
## Operating options

- > Island operation
- > Grid-parallel operation (synchronization device)
- > Emergency power operation (built-in grid monitoring)
- > Seamless back synchronization
- > Emergency operation ( required for hospitals )
- > External circuit breaker control possible

The system is equipped with engine preheating and battery charger, so that the required power can be called up within < 15 seconds in the event of a power failure.

## Monitoring/Control

- > 3-phase network monitoring
- > Engine oil pressure
- > Engine bearing temperature
- > Cooling water overtemperature
- > Geno Surge
- > Geno Undervoltage
- > Geno Overfrequency
- > Geno Subfrequency
- > Geno Overload
- > Fuel Shortage Warning



## Dimensions

Length: 6.06 m x Width: 2.44m x Height: 2.9m

Weight approx. 15 tons

20 foot High Cube Container

Exhaust outlet top

Exhaust air at the top

Air inlet front side

Left / Right version as required



## Performance data

50Hz:

Continuous power PRP: 1250 KVA - 1000 KW - 1811 A, 400/ 230 V  
cos 0,8

Emergency power output LTP: 1375 KVA

60Hz:(Umschaltbar auf 60Hz)

Continuous power PRP: 1395 KVA - 1116 KW - 2021 A, 400/ 230 V  
cos 0,8

Diesel Engine: Cummins KTA50-G3

Alternator: Stamford PI734B

Power Output: Built-in Generator Circuit Breaker

Connections: Powerlock /Cable luc 12 mm

The Genset's are equipped with Synchronisation and Loadshare Devices

## Noise emission

75 dB(A) in 7m +/- 3 dB(A)





## Operating options

- > Island operation
- > Grid-parallel operation (synchronization device)
- > Emergency power operation (built-in grid monitoring)
- > Seamless back synchronization
- > Emergency operation ( required for hospitals )
- > External circuit breaker control possible

The system is equipped with engine preheating and battery charger, so that the required power can be called up within < 15 seconds in the event of a power failure

## Monitoring/Control

- > 3-phase mains monitoring
- > Engine oil pressure
- > Engine over temperature
- > Cooling water overtemperature
- > Geno Overvoltage
- > Geno Undervoltage
- > Geno Overfrequency
- > Geno Underfrequency
- > Geno Overload
- > Fuel Shortage Warning



## Fuel System

1500 Liter Fuel Tank on Board.

The container floor is made with an oil-resistant design and can capture all types of liquids.

Connections for external Fuel Tanks



## Dimensions

- > Sound proof Design
- > 20 foot Standard Container Dimension CSC certified!
- > Exhaust exit            Container top
- > Air Outlet                Container top
- > Air Inlet                 Front entry
- > Length = 6,06m x width = 2,44 x Height = 2,6m + 0,3m (exhaust Flap)
- > Weight 20 ton incl. Diesel Fuel



## Performance data

**PRP Power :** 1250 kVA - 1000 kW - 1850 A, 400/ 230 V cos 0.8

**Emergency power output:** 1375 kVA

The system can be used as a twin-pack thanks to the synchronization device and load component device.

**Stepload:** 45 % Frequency Drop

### Version 1:

Diesengine: Cummins KTTA 50 G2

Alternator: Leroy Somer

### Version 2:

Diesengine: Cummins KTA 50 G3

Alternator: Stamford PI734B1



## Noise emission

65 dB(A) in 7m

## Operating options

- > Island operation
- > Grid-parallel operation (synchronization device)
- > Emergency power operation (built-in grid monitoring)
- > Seamless back synchronization
- > Emergency operation (required for hospitals )
- > External circuit breaker control possible

The system is equipped with engine preheating and battery charger, so that the required power can be called up within < 15 seconds in the event of a power failure.

## Monitoring/Control

- > 3-phase network monitoring
- > Engine oil pressure
- > Engine bear temperature
- > Cooling water overtemperature
- > Geno Surge
- > Geno Undervoltage
- > Geno Overfrequency
- > Geno Subfrequency
- > Geno Overload
- > Fuel Shortage Warning



## Fuel/Diesel Tank

2800 Liter Tank Un Board (Behizbar)

Refuelling via DIN standard connection with limit sensor (when transporting the trailer on public roads, a maximum of 990 litres may be in the tank!). The fuel anchor is double-walled. In addition, the container floor is oil-proof and can collect all liquids.

## Trailer features

- > Sound-absorbing design
- > 3 axles semitrailer trailer
- > Megatrailer
- > Maximum permissible total weight: 33,000 kg
- > Net weight: 28,000 kg
- > Actual fifth wheel load: 8,500 kg
- > Saddle height (king pin): from 75 cm to 100 cm
- > Axles: 3 axles each 9000 kg with air suspension, with axle 1 being a lift axle
- > Trailer Yes: 4 meters
- > Trailer Length: 14.55 meters
- > Trailer width: 2.55 meters
- > Brake system: 2 line compressed air all-wheel brake with ABV and ALB
- > Auxiliary brake system (external brake system 6.5 bar): spring-loaded brake acting on the 2nd and 3rd axles





## Performance data

PRP: 1250 kVA - 1000 kW - 1811 A, 400/ 230 V cos 0.8

LTP: 1375 kVA

60Hz:(Switchable to 60Hz)

PRP: 1395 kVA - 1116 kW - 2021 A, 400/ 230 V cos 0.8

Diesel engine: Cummins QSK 45 G4

Alternator: Stamford HC734F

Power Output: Built-in Generator Circuit Breaker  
Copper busbar with cable lug 12 mm

## Noise emission

80 dB(A) in 7m +/- 3 dB(A)



## Operating options

- > Island operation
- > Grid-parallel operation (synchronization device)
- > Emergency power operation (built-in grid monitoring)
- > Seamless back synchronization
- > External circuit breaker control possible

The system is equipped with engine preheating and battery charger, so that the requested power can be called up in < 15 seconds in the event of a power failure.



## Monitoring/Control

- > 3-phase network monitoring
- > Engine oil pressure
- > Engine bear temperature
- > Cooling water overtemperature
- > Geno Surge
- > Geno Undervoltage
- > Geno Overfrequency
- > Geno Subfrequency
- > Geno Overload
- > Fuel Shortage Warning



## Fuel/Diesel Tank

1400Liter tank on board

Refuelling from the outside on the left and right side of the container The container floor is oil-resistant and can collect all liquids.

Connections for mobile tank systems

## Characteristics of the unit structure

Soundproofed structure

20 foot Norm Container

Exhaust outlet top

Exhaust air at the top

Airinlet front side

Length = 6.06m x width = 2.44 x height = 2.6m + 0.3m (exhaust flap)

Weight: 20,6 tons incl. diesel



## Performance data

### 50Hz and 60Hz

Continuous power: 1500 kVA - 1250 KW - 2173 A, 400/ 230 V cos 0.8

Emergency power: 1650 kVA

Dieselmotor: QSK 50 G4

Generator: Stamford

Power Output: Built-in Generator Circuit Breaker

Connections: Kabenschuh 12 mm

The system can be used as a twin-pack thanks to the synchronization device and load share device.

## Noise emission

70 dB(A) in 7m

## Fuel/Diesel Tank

990 liters tank on board

The oil-resistant container floor can collect all liquids. The container has a collection capacity of 120% of the tank volume. The drip pan is monitored by a float switch and an Alarm message is reported to the controller.

Refuelling via DIN standard connection with limit sensor.

## Characteristics

- > Soundproofed structure
- > 20 foot standard container, CSC certified.
- > Exhaust outlet top
- > Exhaust air at the top
- > Supply air on the front side
- > Weight 20.500kg
- > Outer dimensions L = 6.06m; W= 2.44m; H= 2.7m



## Operating options

- > Island operation
- > 50Hz and 60Hz operation
- > Grid-parallel operation (synchronization device)
- > Emergency power operation (built-in grid monitoring)
- > Seamless back synchronization
- > Emergency operation ( required for hospitals )
- > External circuit breaker control possible

The system is equipped with engine preheating and battery charger, so that the requested power can be called up in < 15 seconds in the event of a power failure.

## Control

- > 3-phase network monitoring
- > Engine oil pressure
- > Leakage Contaiener Raum
- > Cooling water overtemperature
- > Geno Surge
- > Geno Undervoltage
- > Geno Overfrequency
- > Geno Subfrequency
- > Geno Overload
- > Fuel Shortage Warning



## Silent 2030/2233 kVA Genset Rental Version



### Container

3 off purpose built Super Silent containers to accommodate Cummins QSK60-G4 and QSK60-G11 (emission optimized) generators.

The Containers are acoustically designed with Standard High Cube Container Dimension and inclusive Sound Attenuators.

Color: Container RAL 9010 White

### Noise emission

75dB(A) @ 7m +/-3 dB(A)

### Fuel/Diesel Tank

Capacity of 5000 Liter



## Dimensions

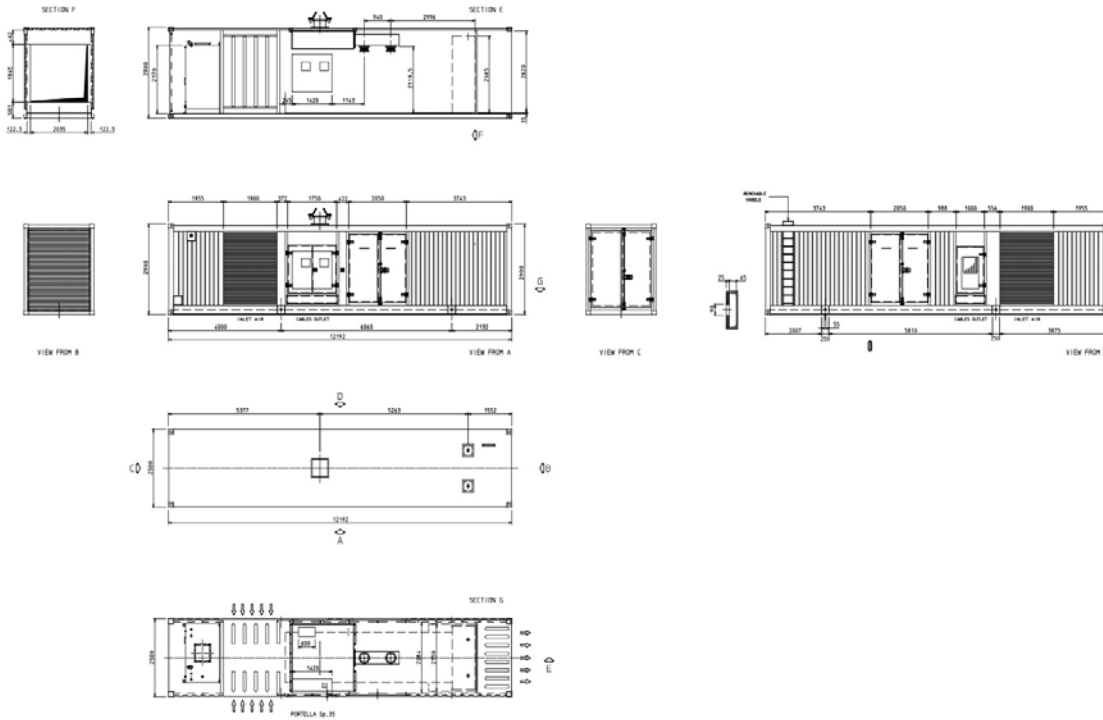
Length:	12192mm
Width:	2500mm
Height:	3050 mm
Weight	26.500kg (With Empty Fuel Tank)



## Control

Set mounted radiator designed for high end temperatures . Mecc Alte ECO 46-2L/4 alternator, , set mounted 4000A 4P motorised breaker. Open Skid Generators installed within purpose built acoustic containers.

Voltage:	400V 3Ph 50Hz
Engine:	Cummins QSK60-G4 and QSK60-G11 (emission optimized)
Speed:	1500rpm
Control:	DEIF AGC4-MK2
Engine Gov:	Cummins ECU
Alternator:	Mecc Alte ECO46 1L/4 with MAUX excitation
Circuit Breaker:	4 Pole 4000A ABB motorised 100kA breaking capacity with Micrologic 6.0A trip unit .
Preheating:	Thermostatically controlled 9kW 400V 3 phase water jacket heater with circulating pump
Auxiliary Dev:	Deif 10A intelligent mains battery charger Automatic Electric Pre-lubricating Pump Fuel return cooler Primary water separator filter



## Container

3 off purpose built Super Silent containers to accommodate MTU16V4000G63 open set generators. The Containers are acoustically designed with Standard High Cube Container Dimension and inclusive Sound Attenuators. 2 Right Hand and 1 Left Hand Container.

Color: Container RAL 9010 White

## Noise emission

80dB(A) @ 7m +/-3 dB(A)

## Fuel/Diesel Tank

Capacity of 4600 Liter

## Dimensions

Length:	12192mm
Width:	2500mm
Height:	3050mm
Weight:	26.500kg (With Empty Fuel Tank)

## Control

Genset built with MTU 16V4000G63. Rated at 2307/2500kVA.

Set mounted radiator designed for high end temperatures . Mecc Alte ECO 46-2L/4 alternator, oil primer and centrifuge fitted as confirmed by MTU, set mounted 4000A 4P motorised breaker and Starpoint Breaker for open Starpoint Operations

Open Skid Generators installed within purpose built acoustic containers.

Voltage:	400V 3Ph 50Hz or 60Hz(with 50Hz Auxilliary Supply for Electrical FAN)
Engine:	MTU 16V4000G63
Speed:	1500/1800rpm
Control:	DEIF AGC4-MK2
Engine Gov:	ADEC
Alternator:	Mecc Alte ECO46 2L/4A with MAUX excitation
Radiator:	Tecno Group TG00094AA 30m3/s reduced airflow radiator with electric powered cooling fan
Circuit Breaker:	4 Pole 4000A Schneider model NWO4 motorised H2 100kA breaking capacity with Micrologic 6.0A trip unit .
Preheating:	Thermostatically controlled 9kW 400V 3 phase water jacket heater with circulating pump
Auxiliary Dev:	Deif 10A intelligent mains battery charger Automatic Electric Pre-lubricating Pump Set mounted 2000A neutral earthing contactor with CT Fuel return cooler Centrifugal oil filter (MTU) Primary water separator filter



# Mobile rotary UPS 300kW - 600kW / 660kVA scalable



## Specification and Data

Voltage:	3ph 380Vac - 420Vac, with Transformer up to 25kV
Frequency:	50Hz and 60Hz
Rating:	300kW - 600kW /660kVA , scalable within one Container
	adjustable redundancy due to Modular Setup
Efficiency at 25% Load:	96% (at 400Vac)
Noise:	53 dB(A) @ 7m
Ride through time	
at 75% Load	27 seconds
at 50% Load	40 seconds

## Container Specification

length:	3,2m (300kW configuration) 6,2m (600kW configuration)
width:	2,5m
height:	2,6m
weight:	5 tons (300kW configuration) 10 tons (600kW configuration)

# Mobile rotary UPS 900kW - 1800kW / 2000kVA scalable

USV



## Specification and Data

Voltage:	3ph 380Vac - 420Vac, with Transformer up to 25kV
Frequency:	50Hz and 60Hz
Rating:	900kW - 1800kW / 2000kVA , scalable within one Container adjustable redundancy due to Modular Setup
Efficiency at 25% Load:	96% (at 400Vac)
Noise:	53 dB(A) @ 7m
Ride through time	
at 75% Load	27 seconds
at 50% Load	40 seconds
at 75% Load	27 seconds
at 50% Load	40 seconds

## Container Specification

length:	9,2m
width:	2,5m
height:	2,6m
weight:	30 Tons (at 1500kW configuration)



Power:	200 KW
Power levels:	10/ 10/ 20/ 50/ 100/ kW
Connection voltage:	3 x 400 V; 50 Hz ; +/- 5 %
Duty cycle:	100%
Cooling:	horizontal forced ventilation
Fan voltage:	3 x 400 V; 16A CEE , 50 Hz
Resistance material:	stainless steel elements
Resistance increase:	R cold / R warm +/-10%
Manufacturing tolerance:	+/- 5%
Ambient temperature:	-25°C - + 45°C
Housing:	Sheet steel, galvanized and powder-coated with 4 crane eyelets and 4 feet
Farbton:	RAL 7035
Degree of protection, load resistance:	IP21
Degree of protection, control cabinet:	IP54
Dimensions:	W 100 x H 1830 x D 1340 mm
Weight, approx.:	300 kg

Incl. switchgear with connection terminals, fuses, load contactors, control panel.



# MOBILE LOADBANK 1000kW Ohmsch

LOADBANK



Power :	1000 KW
Power levels :	1/ 2/ 2/ 5/ 10/ 10/ 20/ 50/ 100/ 200/ 200/ 200/ 200 KW
Connection voltage:	3 x 400 V; 50 Hz; +/- 5 %
Duty cycle:	100%
Cooling:	horizontal forced ventilation
Fan voltage:	3 x 400 V; 50 Hz; 32A CEE plug
Airflow Monitoring:	Wind Flow Switch
Resistance material:	stainless steel elements
Resistance increase:	R cold / R warm +/-10%
Manufacturing tolerance:	+/- 5%
Ambient temperature:	-25°C - + 45°C
Housing:	Sheet steel, galvanized and powder-coated with 4 crane eyes and 4 feet
Farbton:	RAL 7035
Degree of protection, load resistance:	IP21
Degree of protection, control cabinet:	IP54
Dimensions:	W 2500 x H 1300 x D 1300 mm
Weight, approx.:	925 kg

Incl. switchgear with M12 connection bolts on copper rail, fuses, load contactors etc.  
Control elements in the control cabinet door.



DATA SHEETS  
RENTAL EQUIPMENT



# LOADBANK

# MOBILE LOADBANK 1000kW Resistive



Power:	1000 kW
Power levels:	1,2,2,5,10,10,20,50,100, 200*4 kW
Connection voltage:	3 x 400 V; 50 Hz; +/- 5 %
Duty cycle:	100%
Cooling:	side induction, exhaust air upwards
Fan voltage:	3 x 400 V; 50 Hz, CEE 32 amps
Resistance material:	stainless steel elements
Resistance increase:	R cold / R warm $\pm$ 10 %
Manufacturing tolerance:	$\pm$ 5%
Ambient temperature:	-25°C - + 40°C
Housing:	Sheet steel, galvanized and powder-coated
Farbton:	RAL 7035
Degree of protection, load resistance:	IP21
Degree of protection, control cabinet:	IP54
Dimensions:	L 2450 x H 1980 x W 1440 mm
Weight, approx.:	1200 kg

Incl. switchgear with connection terminals, fuses, load contactors, etc.  
Control elements in the control cabinet door.



DATA SHEETS  
RENTALEQUIPMENT



# MOBILE LOADBANK

## 1000kW Resistive

LOADBANK



Power:	1000 kW
Power levels:	1,2,2,5,10,10,20,50,50,100, 200*4 kW
Connection voltage:	3 x 400 V; 50 Hz ; +/- 5 %
Duty cycle:	100%
Cooling:	vertical forced ventilation
Fan voltage:	3 x 400 V; 50 Hz, CEE 16 amps
Resistance material:	stainless steel elements
Resistance increase:	R cold / R warm +/-10 %
Manufacturing tolerance:	+/- 5%
Ambient temperature:	-25°C - + 40°C
Housing:	Sheet steel, galvanized and powder-coated with 4 crane eyes and 4 feet
Color:	RAL 7035
Degree of protection, load resistance:	IP21
Degree of protection, control cabinet:	IP54
Dimensions:	L 1800 x H 2180 x W 1400 mm
Weight, approx.:	850 kg

Incl. switchgear with M12 connection bolts, fuses, load contactors etc.

Control elements in the control cabinet door



Power:	1250 kW
Power levels:	1,2,2,5,10,10,20,50,50,100, 200*5 kW
Connection voltage:	3 x 400 V; 50 Hz; +/- 5 %
Duty cycle:	100%
Cooling:	side induction, exhaust air upwards
Fan voltage:	3 x 400 V; 50 Hz, CEE 32 amps
Resistance material:	stainless steel elements
Resistance increase:	R cold / R warm £ 10 %
Manufacturing tolerance:	+/- 5%
Ambient temperature:	-25°C - + 40°C
Housing:	Sheet steel, galvanized and powder-coated
Farbton:	RAL 7035
Degree of protection, load resistance:	IP21
Degree of protection, control cabinet:	IP54
Dimensions:	L 2660 x H 1980 x W 1440 mm
Weight, approx.:	1500 kg

Incl. switchgear with connection terminals, fuses, load contactors, etc.  
Control elements in the control cabinet door.



# MOBILE LOADBANK

## 2300kVA Resistive/Inductive

# LOADBANK



Load Ratings (continuous):	Hz	50	60
	KVA (kW)	2300 (1850) @ 400V	2943(2468)@460V3ph
	PF	0.80	0.84
Loading Increments:	KVA	33.0 @ 415V	37.0 @ 460V
Remote Control:	10m + 50m Cable for Remote Control		
Auxiliary Supply:	400V, 50Hz , 63A CEE Plug		
Load Terminals:	Busbar M12		
Overall Dimensions:	Length:	6.10m	
	Width:	2.44m	
	Height:	2.60m	
Weight:	10.600 kg		

## Three-phase oil distribution transformer 1600 kVA Optional in container with switchgear Optional im Container mit Schaltanlage

Manufacturer:	Pauwels
Type:	TNA
Power:	1600 kVA
Voltage primary:	20000 V
OS-side taps:	+/- 2x2.5%
Voltage sec.:	400/231 V
Frequency:	50 Hz
Groupset:	Dyn 5
Short Circuit Voltage:	5.9% +/- 10% Tolerance
No-load losses/Po:	2200 W + 15% tolerance
Short Circuit Losses/Pk (75):	17000 W + 15% Tolerance
Insulation class:	A
Line-up:	max. 1000 m above sea level
Temperature:	max. 40 °C ambient temperature
Operating mode:	DB
Cooling:	ONAN
Standard:	ÖVE M20
Total weight/pcs. approx.:	3305 kg (without container, without switchgear)



# 3 Phase Dry Type Transformer 2500 kVA Optional in Container with Switchgear

TRAFO



Manufacturer:	Pauwels
Type:	Drytype
Power:	2500 kVA
Voltage primary:	6.6 kV or 3.3kV
Tapping:	+/- 10%
Voltage sec.:	400/231 V
Frequency:	50 Hz
Group:	Dyn 11
Short circuit voltage:	6.39% +/- 10% tolerance
No-load losses/Po:	3130 W + 15% tolerance
Short-circuit losses/Pk (75):	16900 W + 15 % tolerance
Insulation class:	A
Line-up:	max. 1000 m above sea level
Temperature:	max. 40 °C ambient temperature
Operating mode:	DB
Cooling:	ON
Standard:	ÖVE M20
Material:	Al/Al
Execution:	In Vakuum Decay
Total weight/pcs. approx.:	5685 kg
Dimensions :	L: 2500mm x W: 1310mm x H: 2217mm



# 3 Phase Dry-Type-Transformer 4500kVA

## Optionally installed in Container with Switchgear



Manufacturer:	Pauwels
Type:	Dry type
Rating:	4500 kVA
Voltage prim.:	20000 V
Primary Tapping	+/- 2x 2,5 %
Voltage sec.:	400/231 V
Frequency:	50 Hz
Vector Group:	Dyn 11
Short circuit Value:	8 % +/- 10 % Tolerance
No load Losses /Po:	6000 W + 15 % Tolerance
short circuit Loss/Pk (75):	36000W+15%Tolerance
Isolation Class:	24/50/125kV
sea level:	max. 1000 m
Temperature:	max. 40 °C Ambient Temperature
Operation:	DB
Cooling:	AN
Norm:	ÖVE M20

### Container

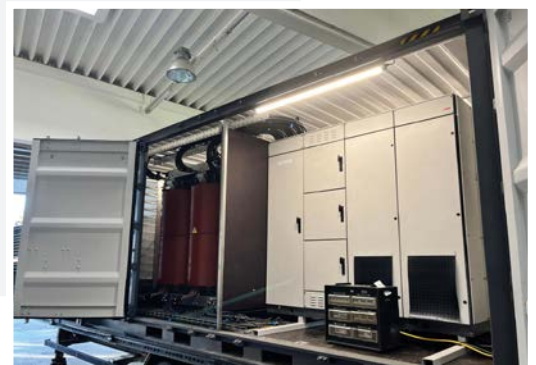
Weight. ca.: 15700 kg

Dimension: L= 6060mm x W= 2450mm x H= 2900mm

### without Container

Weight ca.: 9700 kg

dimensions: L= 2450mm x W= 1540mm x H= 2570mm



# Container Transformer Station with 20kV MV and LV Switchgear

TRAFO

HV Switchgear:	Sarel 630A 24kV
LV Switchgear:	EATON/RITTAL 1250A
LV Output:	6 x NH3
Voltage prim.:	5.12kV -22kV
Voltage sec.:	400/231 V
Frequency:	50 Hz and 60Hz
Auxiliaries:	Container Ventilation Temperature Supervision Container Lights and Sockets
Temperature:	max. 40 °C Ambient Temperature

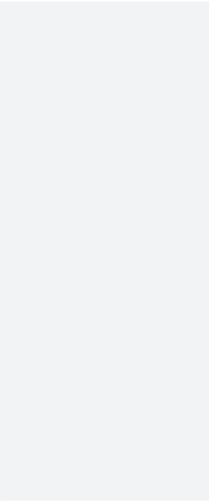
Weight ca.: 6240 kg

Dimension: L= 6060mm x W= 2500mm x H= 2950mm

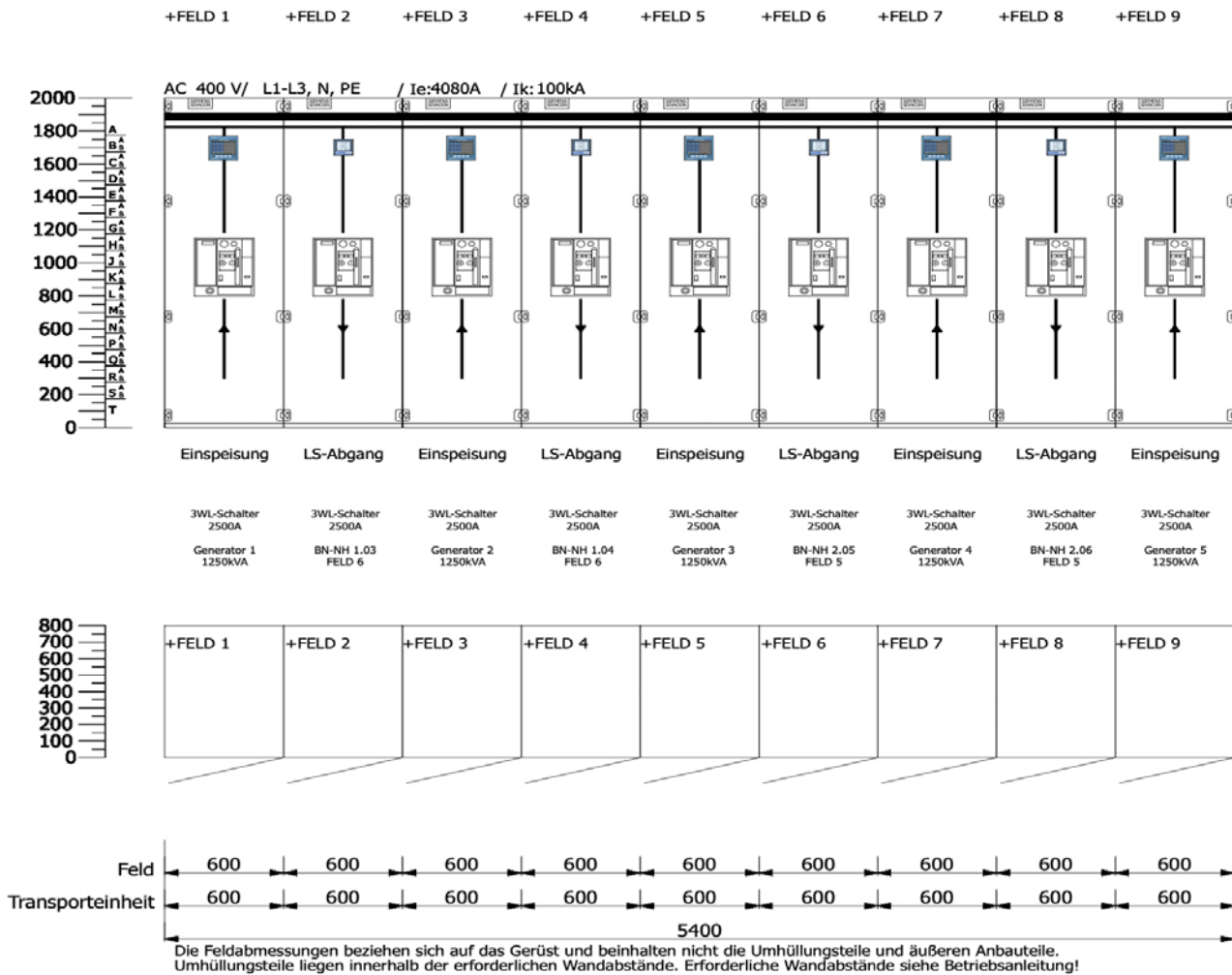


DATA SHEETS  
RENTAL EQUIPMENT



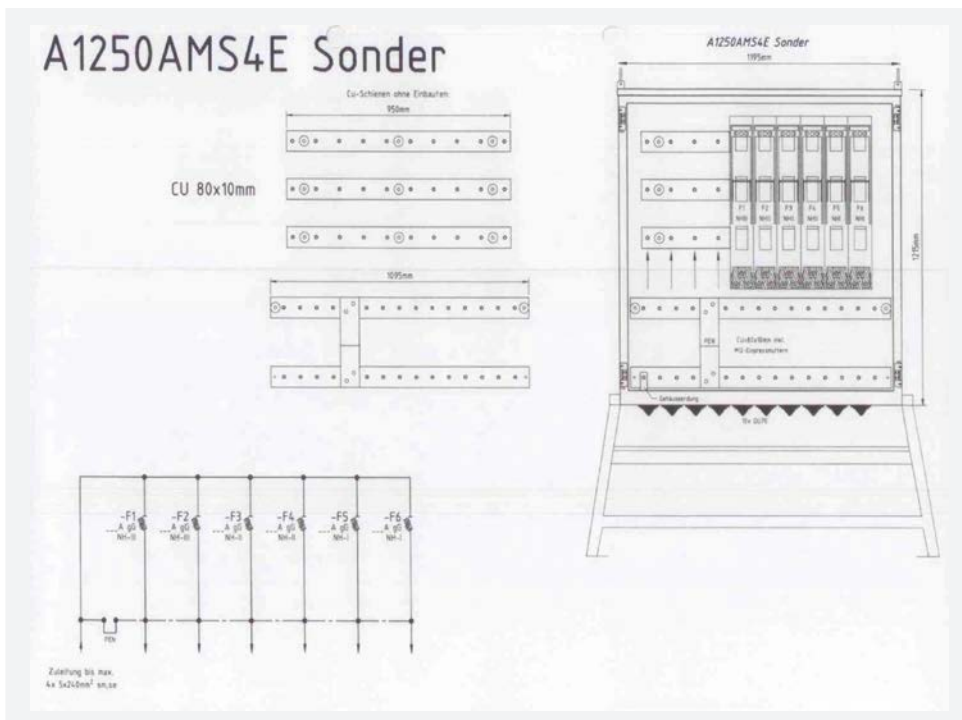








Input: 1250A Copper Rail with M12 Bolt  
 Output: 2 x NH1, 2 x NH2 , 2x NH3  
 Version: Outdoor and freestanding  
 Dimensions: L 1600mm, W 1000mm, H1800mm



# 22kV, 630A MV Switchgear Container

SWITCHGEAR



## Container

Dimensions: Container only: 6060mm (L) x 2440mm (W) x 2900mm (H)

Switchgear Container houses the 22kV switchgear. Double doors and single entrance door and single to the Switchgear Room.



## Specification and data

20 feet container

Length:	6.06m
Width:	2.44m
Height:	2.6m
Weight:	7000kg

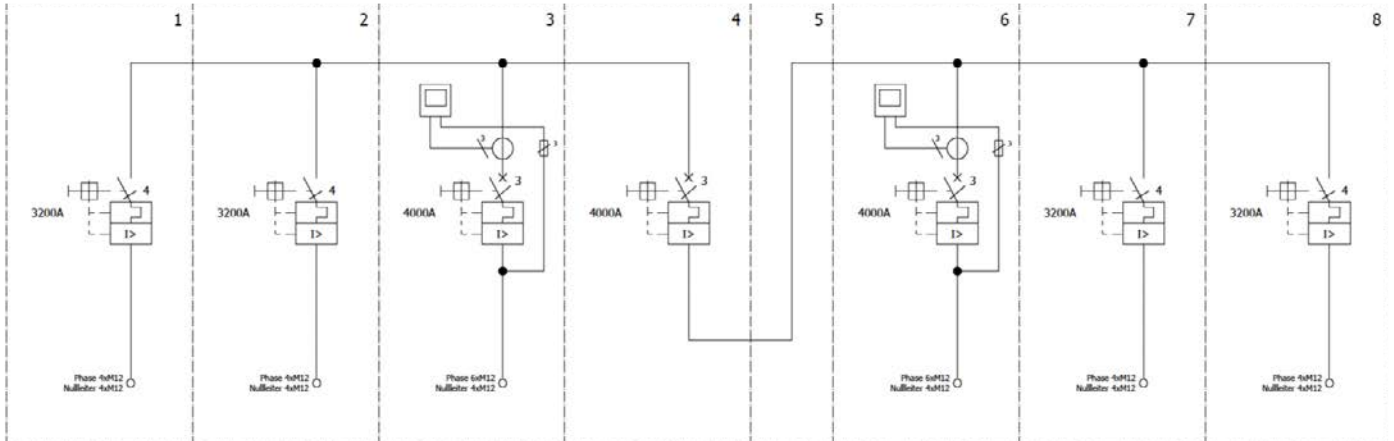


## Equipment

3 x 4000A ABB circuit breaker and 4 x 3200A ABB circuit breaker on busbar. Ventilation and lighting via 230Vac auxiliary supply. Transformer monitoring for external transformer with circuit breaker tripping. Janitza multifunctional devices with energy measurement



# SWITCHGEAR





## Specification and data

Mains Circuit Breaker 2000A Schneider Masterpact with 230V ac motor drive and 24V dc shunt trip coils

4 x 600A Powerlock plug-in system

Voltage sensing and circuit breaker control wired to terminals.

Suitable for outdoor installation.

Dimensions: 1300mm x 600mm x 1300mm

Weight: 370kg



TRANS™CUBE - IBC (Intermedial Bulk Container) for the transport and storage of diesel fuel. Complies with UN/ADR regulations.

- > Modell 30 TCG
- > Length: 230 cm, Width: 155 cm, Height: 132 cm, Weight: 992 kg
- > Steel in steel construction
- > 3000 liters capacity
- > Connections of up to three generators
- > Lockable housing
- > Standard color: white
- > galvanized frame
- > Forklift pick-up and crane eyes
- > Ideal for transport by truck or pick-up



TRANS™CUBE-IBC (Intermodal Bulk Container) for the transport and storage of diesel fuel. Complies with UN/ADR regulations.

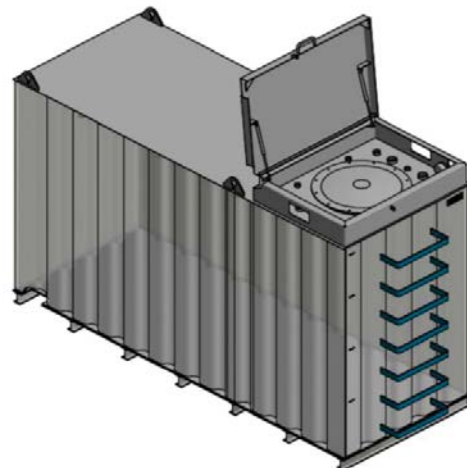
- > Modell 60 TCG
- > Length: 244cm, Width: 244 cm, Height: 132 cm, Weight: 2100 kg
- > Steel in steel construction
- > 6000 liters capacity
- > Connections of up to three generators
- > Lockable housing
- > Standard color: white
- > galvanized frame
- > Forklift pick-up and crane eyes
- > Ideal for transport by truck or pick-up





Rombicus - Double-walled tank for storage of diesel fuel.

- > Length: 345cm, Width: 126 cm, Height: 232 cm, Weight: 2800 kg
- > Steel in steel construction
- > Vacuum is monitored, so damage to the inner and outer wall can be detected
- > 6800 liters capacity
- > Connections of up to 2 generators
- > Lockable housing
- > Standard color RAL 3003
- > galvanized frame
- > Forklift pick-up and crane eyes (only lift empty)





TRANS™CUBE-IBC (Intermodal Bulk Container) for the transport and storage of diesel fuel. Complies with UN/ADR regulations.

- > Modell 24000TCG
- > 20 f container steel in steel construction
- > 24000 liters capacity
- > Connections of up to three generators
- > Lockable containers
- > Standard color: white
- > Fuel gauge
- > Leak monitoring with warning signal
- > Fuel Shortage Switch with Warning Signal
- > Forklift pockets

# Cables, distribution panels and Event equipment

EQUIPMENT



## Equipment

- > Various cable sets from 230 Schuko to 125 A cable in almost any length
- > Powerlock plugs and sockets
- > Various distribution blocks
- > Single conductors 150 mm<sup>2</sup> and 300 mm<sup>2</sup> various lengths
- > Mains changeover groups with circuit breakers up to 3000 A
- > Various cable protectors
- > Control cabinets for external circuit breakers incl. synchronization device
- > Grounding systems
- > Construction fences for demarcating facilities



DATA SHEETS  
RENTAL EQUIPMENT



## **XFLEXE-MONO** mit flammwidrigem Außenmantel ohne Brandfortleitung Flexibles Mittelspannungskabel



### Vorteile

- Flammwidrig, keine Brandfortleitung
- Flexibel, wickelbar
- Halogenfrei, EMV-optimiert
- Robuster, abriebfester Mantel
- Hohe Beständigkeit gegen UV-Strahlen, Ozon und Mineralöl

## Equipment

- > Transformers up to 32 kV and 5 MVA
- > MV switchgear
- > Various medium-voltage flexible cables
- > Various medium current and voltage transformers
- > Insulation Monitoring



# Uninterrupted transformer maintenance Remote Maintenance Box

EQUIPMENT

**Mittes**  
engineering gmbh  
ENERGIETECHNIK

REMOTE MAINTENANCE BOX - RMB



# EQUIPMENT

## Application

The REMOTE MAINTENANCE BOX meets the requirements to safely and easily perform maintenance on transformer stations and other electrical installations. Additionally, it enables applications where the operation of the unit must take place remotely such as near the feed-in point. With the RMB, maintenance on the transformer station can be carried out without interrupting your customer's supply and without exposing you to increased risks. Simply connect the unit to the feed-in point and link the RMB to the unit. You can then control the energy flow in any desired direction. Your customer will not notice your switching.

## Simple Operation

The RMB has been designed for utmost ease of use. A step-by-step sequence with this remote control makes it extremely simple for the operator. The technician receives both visual and audible signals as soon as the generator is in phase with the network and the fuses can be engaged.

## Safety

Before maintenance on transformers can begin, the load must be transferred to the unit to safely remove the fuses. After maintenance, the critical phase is the reinsertion of the fuses. Poor phase alignment can cause sparking and overload, which should be avoided. To prevent such issues, the RMB is connected, enabling rapid static synchronization and, even during significant load surges, maintaining the phase angle between the generator and the network at nearly 0 degrees. Practical tests have shown that with load surges of 30%, there is only a temporary phase deviation of approximately 11 degrees.

## Flexibility

During normal operation, you can disconnect and store the RMB or use it for the next retrofit. When switching back, the device is simply reconnected and resynchronized.

## Sample Diagram

