



## Datasheet

M.I.T.T.E.S engineering GmbH  
Oberschaden 32  
4070 Puppung  
Austria

### Mobile Rentalgenset 1375 kVA



#### **Performance data:** 50Hz:

PRP: 1250 kVA - 1000 KW - 1811 A, 400/ 230 V cos 0.8

LTP: 1375 kVA

60Hz:(Switchable to 60Hz)

PRP: 1395 kVA - 1116 kW - 2021 A, 400/ 230 V cos 0.8

Diesel engine: Cummins QSK 45 G4

Alternator: Stamford HC734F

Power Output: Built-in Generator Circuit Breaker

#### **Noise emission:**

80 dB(A) in 7m +/- 3 dB(A)

Connections: Copper busbar with cable lug 12 mm

---

Mittes engineering GmbH, Oberschaden 32, 4070 Puppung, Austria  
Tel.: 0043-(0)7272 20695 / Mobil: 0043-(0)699 11082004 Mr. Klaus Mittendorfer  
e-mail: [office@mittes.at](mailto:office@mittes.at) / homepage: [www.mittes.at](http://www.mittes.at)



## Datasheet

M.I.T.T.E.S engineering GmbH  
Oberschaden 32  
4070 Puppung  
Austria

Connections: Copper busbar with cable lug 12 mm



### Operating options:

1. Island operation
2. Grid-parallel operation (synchronization device)
3. Emergency power operation (built-in grid monitoring)
4. Seamless back synchronization
5. External circuit breaker control possible

The system is equipped with engine preheating and battery charger, so that the requested power can be called up in < 15 seconds in the event of a power failure.

### Monitoring/Control:





## Datasheet

M.I.T.T.E.S engineering GmbH  
Oberschaden 32  
4070 Puppung  
Austria

1. 3-phase network monitoring
2. Engine oil pressure
3. Engine beer temperature
4. Cooling water overtemperature
5. Geno Surge
6. Geno Undervoltage
7. Geno Overfrequency
8. Geno Subfrequency
9. Geno Overload
10. Fuel Shortage Warning

### Fuel/Diesel Tank:

1400Liter tank on board .

Refuelling from the outside on the left and right side of the container The container floor is oil-resistant and can collect all liquids.

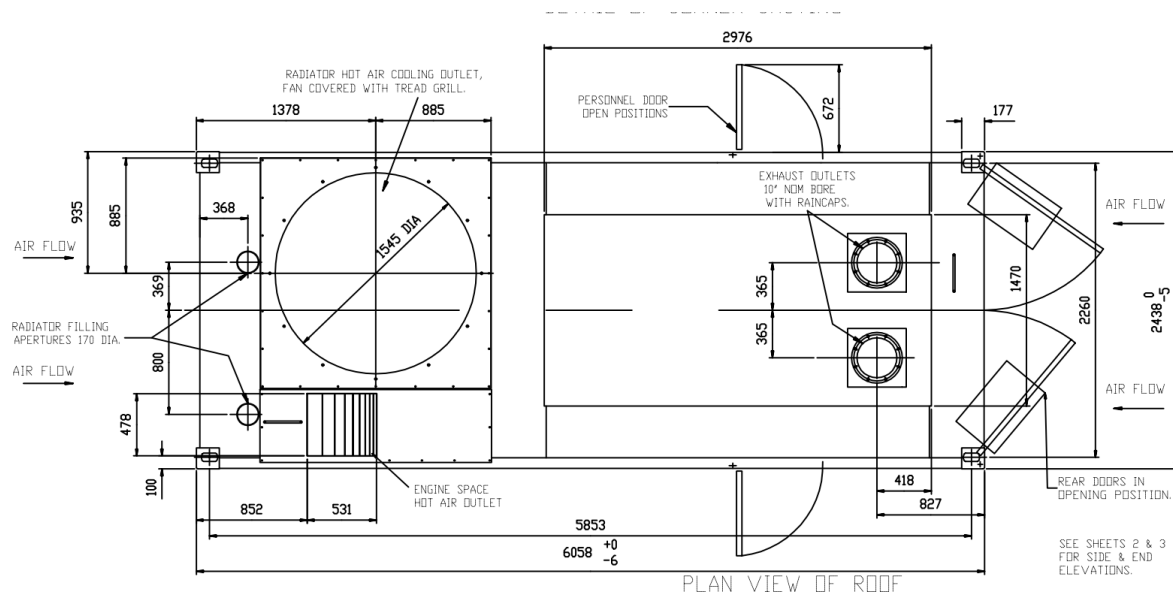
Connections for mobile tank systems



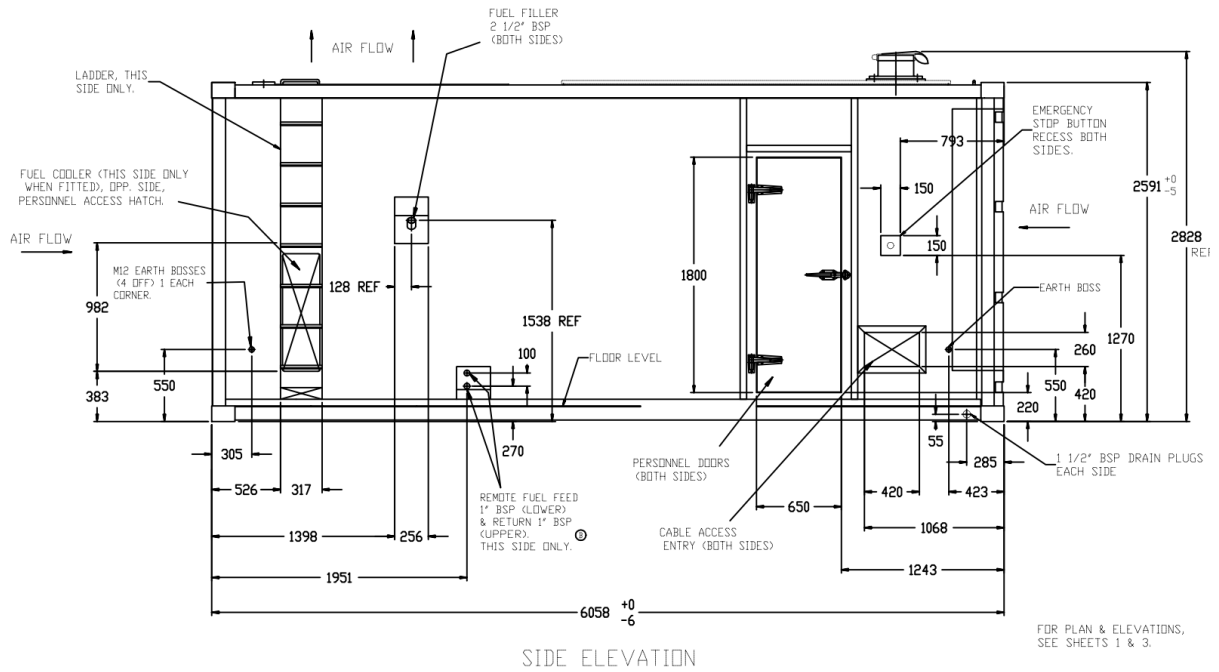
## Characteristics of the unit structure :

1. Soundproofed structure
2. 20 foot Norm Container
3. Exhaust outlet top
4. Exhaust air at the top
5. Airinlet front side
6. Length = 6.06m x width = 2.44 x height = 2.6m + 0.3m (exhaust flap)
7. Weight 20,6 tons incl. diesel

## Dimensions: Top view



## Seiten Ansicht:



## Stirnseitige Ansicht

