

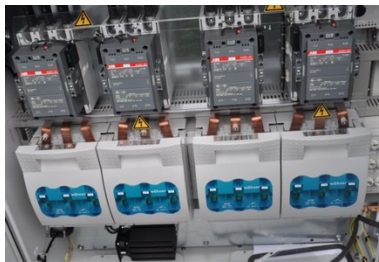


Datenblatt

M.I.T.T.E.S engineering GmbH
Oberschaden 32
4070 Puppung
Austria

MOBILE LOADBANK

1000kW Resistive



Power :	1000 KW
Power levels :	1/ 2/ 2/ 5/ 10/ 10/ 20/ 50/ 100/ 200/ 200/ 200/ 200 KW
Connection voltage:	3 x 400 V; 50 Hz; +/- 5 %
Duty cycle:	100%
Cooling:	horizontal forced ventilation
Fan voltage:	3 x 400 V; 50 Hz; 32A CEE plug
Airflow Monitoring:	Wind Flow Switch
Resistance material:	stainless steel elements
Resistance increase:	R cold / R warm +/-10%
Manufacturing tolerance:	+/- 5%
Ambient temperature:	-25°C - + 45°C
Housing:	Sheet steel, galvanized and powder-coated with 4 crane eyes and 4 feet
Farbton:	RAL 7035
Degree of protection, load resistance:	IP21
Degree of protection, control cabinet:	IP54
Dimensions:	W 2500 x H 1300 x D 1300 mm
Weight, approx.:	925 kg

Incl. switchgear with M12 connection bolts on copper rail, fuses, load contactors etc.
Control elements in the control cabinet door.