

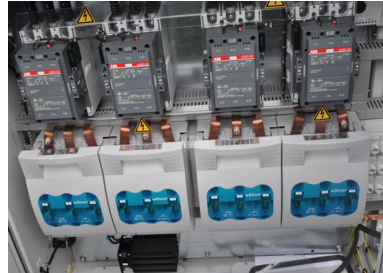


Datasheet

M.I.T.T.E.S engineering GmbH
Oberschaden 32
4070 Puppung
Austria

MOBILE LOADBANK

200kW Ohmsch



Power:	200 KW
Power levels:	10/ 10/ 20/ 50/ 100/ kW
Connection voltage:	3 x 400 V; 50 Hz ; +/- 5 %
Duty cycle:	100%
Cooling:	horizontal forced ventilation
Fan voltage:	3 x 400 V; 16A CEE , 50 Hz
Resistance material:	stainless steel elements
Resistance increase:	R cold / R warm +/-10%
Manufacturing tolerance:	+/- 5%
Ambient temperature:	-25°C - + 45°C
Housing:	Sheet steel, galvanized and powder-coated with 4 crane eyelets and 4 feet
Farbton:	RAL 7035
Degree of protection, load resistance:	IP21
Degree of protection, control cabinet:	IP54
Dimensions:	W 100 x H 1830 x D 1340 mm
Weight, approx.:	300 kg

Incl. switchgear with connection terminals, fuses, load contactors, control panel.